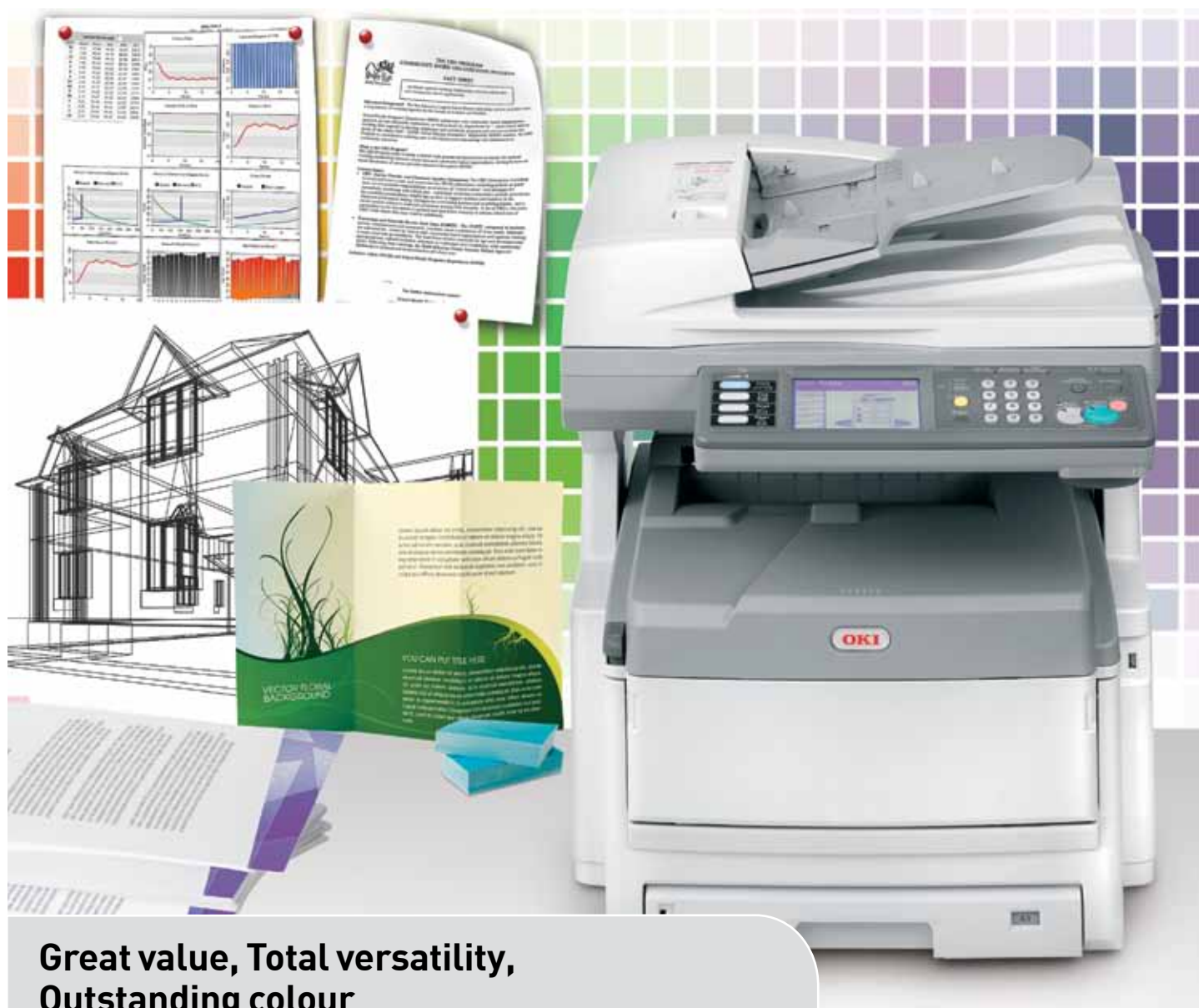


ES8451 MFP / ES8461 MFP

OKI



**Great value, Total versatility,
Outstanding colour**

EXECUTIVE
SERIES

The A4/A3 multifunctional colour printer that adds value and versatility to your business

Using award winning technology, the ES8451 MFP and ES8461 MFP add value to any business. Robust and reliable, these products deliver the versatility of printing, copying, scanning and faxing* A4 and A3 double sided documents in rich high definition colour, ensuring you produce professional looking documents every time.

The ES8451 MFP and ES8461 MFP offer impressive print speeds of up to 26ppm for colour and 34ppm for mono and enable you to print on a variety of print media, to create a range of documents and business collateral in-house, reducing your outsourced print costs and improving efficiency.

These ergonomic devices are built using tried and tested digital LED printing technology and are extremely easy to use. They include duplex printing, copying, faxing and scanning to file, email or USB as well as enhanced control and security features - all as standard.

This affordable series of multifunction devices not only brings the management of documents closer to the workgroup, they will also help your business to improve efficiency and reduce costs.

ES8451 MFP

The ES8451 MFP, with its 22ppm colour and 34ppm mono speed, has been designed for the budget-conscious business.

ES8461 MFP

The ES8461 MFP with its faster print speed, 26ppm colour, is perfect for the more demanding workgroups with higher print volume requirements.

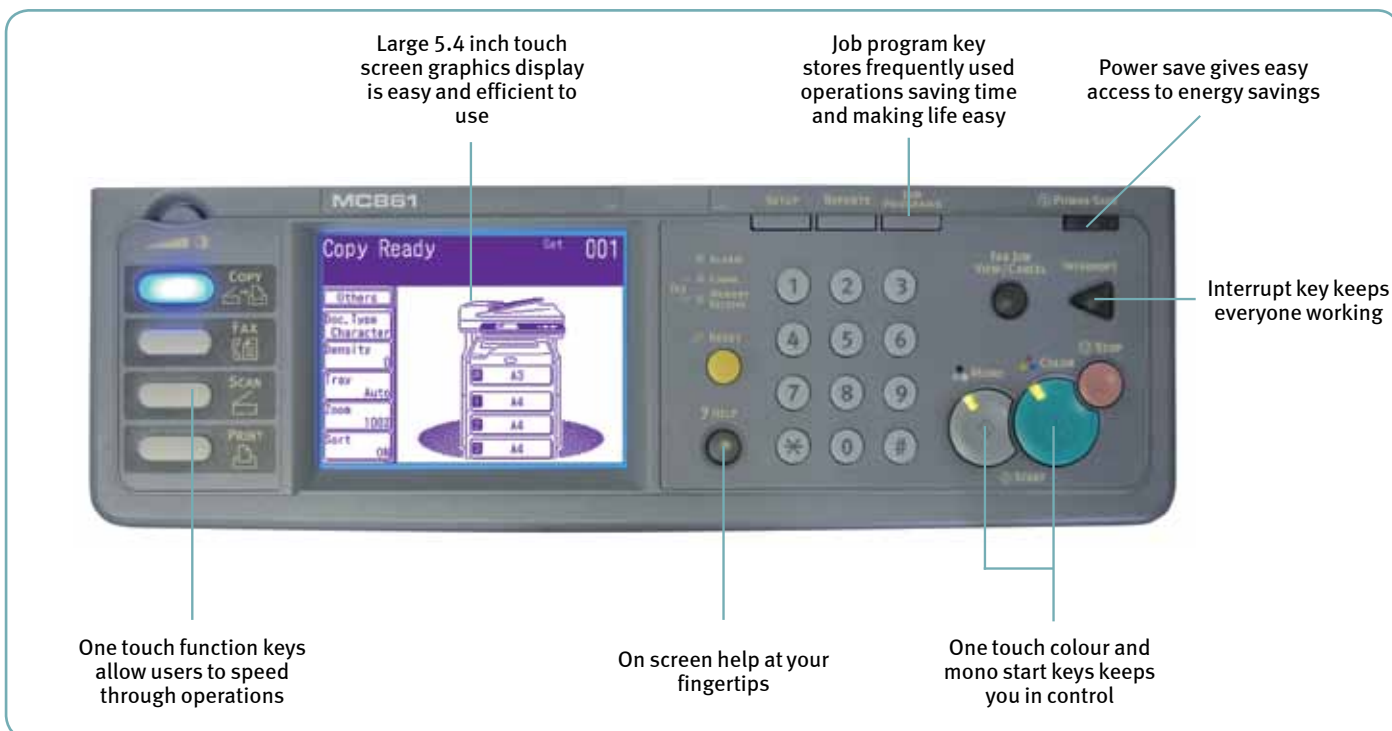
There are 3 versions of each of the models. The “dn” version is the base model and comes with everything you need to perform all office tasks in a neat desktop design. It is network ready, comes with RADF (Reversing Automatic Document Feeder), duplex, full featured fax and a 40GB Hard Disk Drive as standard. The “cdtn” console model adds an additional paper tray and cabinet whilst the “cdxn” comes with 2 additional paper trays and cabinet.



*mono only

Description	Desktop	Console	Console
Colour Speed - ES8451 MFP	22ppm	22ppm	22ppm
Colour Speed - ES8461 MFP	26ppm	26ppm	26ppm
Mono Speed	34ppm	34ppm	34ppm
Time to first print - ES8451 MFP	11.5 secs colour, 9.5 secs mono	11.5 secs colour, 9.5 secs mono	11.5 secs colour, 9.5 secs mono
Time to first print - ES8461 MFP	10 secs colour, 9.5 secs mono	10 secs colour, 9.5 secs mono	10 secs colour, 9.5 secs mono
Printer Language	PCL6 and PCL5, PostScript	PCL6 and PCL5, PostScript	PCL6 and PCL5, PostScript
Document Feeder	50 Sheet RADF	50 Sheet RADF	50 Sheet RADF
Duplex	Standard	Standard	Standard
Paper Capacity (Sheets per tray)	300 + 100	300 + 100 + 530	300 + 100 + 530 + 530
Paper Sizes	A6 to A3 (200gsm max weight)	A6 to A3 (200gsm max weight)	A6 to A3 (200gsm max weight)
Fax	Super G3	Super G3	Super G3
Networked	Standard	Standard	Standard
Secure Print	Standard	Standard	Standard
Scan to Email	Standard with LDAP	Standard with LDAP	Standard with LDAP

Add value to your business with A4 and A3 double sided printing, copying, scanning and faxing



Print

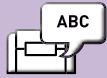
The ES8461 MFP and ES8451 MFP come network ready with PostScript and PCL driver support for easy integration into any environment.

The standard duplex unit makes producing double sided documents quick and easy, saving both time and paper.

Print speeds are up to 26ppm colour and 34ppm mono.



Network



PCL/PostScript



PC/MAC



Copy

A reversing automatic document feeder (RADF) efficiently scans both sides of the document making the copying of double sided documents a simple task.

Separate start buttons for mono and colour jobs keep you in control of costs.



Duplex



Colour/Mono

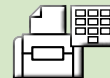


Security

For security of print jobs a 40GB hard disk drive stores jobs until the person with the correct access PIN code retrieves them. For additional security jobs can be secured with 256 bit encryption as they travel across the network and then deleted completely from the disk once printed.



User Control



PIN Print



Encryption Print



Cost Control

The ES8451 and ES8461 come with a range of in-the-box utilities that enable businesses to have complete control over their usage, security and costs.

Utilities such as Colour Access Policy Manager (CAPM) and Print Control manage who can print and what can be printed whilst PrintSuperVision gives IT support staff the control and ability to manage printers centrally.



Cost Control



Access Control



Scanning

The ES8461 MFP and ES8451 MFP connect directly to the network enabling users to scan to a folder on the network (FTP, CIFS).

You can also scan directly to anyone with an email address and with LDAP support you get access to all email addresses stored on the central mail server.

A USB port on the side of the unit allows users to scan to a USB disk drive or memory stick.



Scan to USB



Scan to Folder



Scan to FTP



Scan to Mail



Fax

Super G3 33.6kbps faxing with 500 speed dials, 32 group dials and a 1,000 page memory (72 hour battery) with auto redial and dual access.

Incoming faxes can be forwarded directly to the desktop by email saving both time and paper. Outgoing faxes can be sent directly from the desktop using the fax driver.



Analog Fax



Fax to Mail



Print to Fax

Why OKI?

OKI is the business printing specialist.

Our single-minded aim is to help businesses to grow and to prosper by enabling them to create the best possible impression with their printed communications. By building on our proven, reliable, single-pass technology, we have developed fast, high quality, cost-effective printing solutions that benefit businesses today and into the future.

We also know how important reliability is for customers. That's why every one of our products is built to perform, day in, day out, helping to maintain business efficiency and provide that competitive edge.

OKI. No one does more in business printing.



Considering the Environment

As part of the OKI Group's Charter of Corporate Conduct, OKI continually reviews its efforts to provide environmentally sound solutions to its customers:

- Our products are designed and manufactured with reducing the impact on the environment in mind.
- Increasing the amount of our hardware products and consumables that are recycled is one of our strategic objectives.
- We feel responsible for conducting our business in an environmentally sound manner, contributing to conservation and activities within our local communities.

OKI's Green Leaf symbol, found on all products and packaging, represents our total commitment to collection, recycling and environmental processes.



Energy Star

Our printers and MFPs have earned the Energy Star by helping to eliminate energy waste through particularly energy-efficient designs. They use less energy to perform regular tasks. When not in use, they automatically enter a powersave mode and product features such as, duplex printing, further reduce the wasting of energy and paper resources.

Why Executive Series?

Heritage of award winning products.

Building on OKI's heritage of award winning products, the exclusive Executive Series range of Multifunction Products, colour and mono printers provide hassle-free document solutions, budgetary control and enhanced workflow efficiency.

Our selected Executive Series partners can provide a print strategy and tailored solution that delivers total peace of mind through fully serviced products and the benefits of predictable budgeting.



CarbonZero Manufacturing Facilities

OKI's three main production facilities, located in Ayutthaya (Thailand), Shenzhen (China) and Fukushima (Japan), which manufacture printers and MFPs for the company's European and broader global markets have been made "CarbonZero" in a bid to slow down global climate change. This initiative is in accordance with our commitment to reduce total Greenhouse Gas Emissions, with an emissions reduction target of 6 per cent by 2012. This target is in line with the United Nations climate change objectives. We have invested in a range of carbon offsetting projects through co2 balance, to offset these factories' carbon emissions making them 'CarbonZero'.

20 years of LED Technology

OKI pioneered the development of digital LED technology in printers over 20 years ago. This innovation delivers High Definition printing – for more accurate, striking printed documents. Thanks to this digital LED technology, our printers are compact, environmentally friendly and energy efficient, using significantly less raw materials in the manufacturing process and consuming less energy. LED print heads have no moving parts, making our LED printers robust and ultra reliable.

OKI SYSTEMS (UK) LTD.

550 Dundee Road, Slough
Berkshire, SL1 4LE
United Kingdom

Tel: +44 (0)1753 819819

Fax: +44 (0)1753 819899

WWW.OKIEXECUTIVESERIES.CO.UK